

Inhibition of Granzyme B by PI-9 Protects Prostate Cancer Cells From Apoptosis

Manisha Ray,¹ Daniel R. Hostetter,² Carly R.K. Loeb,¹ Jeffry Simko,³ and Charles S. Craik^{2*}

¹Graduate Group in Biochemistry and Molecular Biology, University of California, San Francisco, California

²Department of Pharmaceutical Chemistry, University of California, San Francisco, California

³Department of Anatomic Pathology and Department of Urology, University of California, San Francisco, California

BACKGROUND. In order for tumors to grow and proliferate, they must avoid recognition by immune cells and subsequent death by apoptosis. Granzyme B (GrB), a protease located in natural killer cells, initiates apoptosis in target cells. Inhibition of GrB by PI-9, its natural inhibitor, can prevent apoptosis. Here we investigate whether PI-9 protects prostate cancer cells from apoptosis.

METHODS. The expression of PI-9 was quantified by qPCR in several prostate cancer cell lines, and GrB activity was tested in each cell line. PI-9 was overexpressed in LNCaP cells, which lack endogenous PI-9. Apoptosis was induced by natural killer cells in LNCaP cells that either contained or lacked PI-9, and the percent cell death was quantified. Lastly, PI-9 levels were examined by qPCR and immunohistochemistry in prostate tumor tissue.

RESULTS. Prostate cancer cell lines that expressed PI-9 could inhibit GrB. Overexpression of PI-9 protected LNCaP cells from natural killer cell-mediated apoptosis. Examination of the levels of PI-9 in tissue from prostate tumors showed that PI-9 could be upregulated in low grade tumors and stochastically dysregulated in high grade tumors. Additionally, PI-9 was found consistently in high grade prostatic intraepithelial neoplasia and atrophic lesions.

CONCLUSIONS. These results indicate that overexpression of PI-9 can protect prostate cancer cells from apoptosis, and this effect may occur in human prostate tumors. These findings imply that early prostatic inflammation may trigger this increase in PI-9. This suggests that PI-9 upregulation is needed early in tumor progression, before additional protective mechanisms are in place. *Prostate* © 2011 Wiley-Liss, Inc.

KEY WORDS: PI-9; Granzyme B; apoptosis; prostate cancer; immunosurveillance

INTRODUCTION

Immunosurveillance, the process by which the immune system monitors and destroys virally infected or cancerous cells, has emerged as a promising new approach to treating prostate cancer [1]. Cytotoxic lymphocytes (CLs) carry out immunosurveillance by inducing apoptosis in target cells using two pathways: activating death ligand receptors and/or activating granule exocytosis. During granule exocytosis, CLs deliver granules filled with proteases that induce apoptosis, known as granzymes, into aberrant cells. Granzyme B (GrB), a 32 kDa serine protease in the S1A family [2], is the main apoptotic initiator. Cleavage of GrB substrates either activates pro-death functions, such as activation of pro-caspases 3, 7 [3], and 8 [4], or deactivates pro-proliferative functions [5,6]. GrB is the main apoptotic initiator in natural killer

cells, and is expressed in all effector CD8+ T cells [7]. GrB is the chief effector of immunosurveillance, and this mechanism must be disrupted for cancer cells to survive. In fact, the ability to evade

Additional Supporting Information may be found in the online version of this article.

Grant sponsor: National Institute of Health; Grant number: NIH R01CA128765.

None of the authors listed have any significant or perceived conflicts of interest relating to the publishing of this manuscript.

*Correspondence to: Dr. Charles S. Craik, University of California, Genentech Hall, MC 2280, 600 16th Street, San Francisco, CA 94158-2517. E-mail: craik@cgl.ucsf.edu

Received 13 May 2011; Accepted 19 August 2011

DOI 10.1002/pros.21486

Published online in Wiley Online Library (wileyonlinelibrary.com).

immunosurveillance has been classified as a defining hallmark of cancer [8].

One way cancer cells could evade immunosurveillance is to prevent the initiation of apoptosis by inhibiting GrB. GrB's natural inhibitor is PI-9 (serpin B9), a 42 kDa clade B serpin which inhibit serine proteases intracellularly. Serpins irreversibly inhibit their target protease, which can be detected by the formation of an SDS-stable complex with the target [9,10]. PI-9 is abundantly expressed in the cytosol of CLs to protect them from inadvertent exposure to their own GrB [11]. PI-9 is also found in immune-privileged tissues, such as the placenta and the lining of blood vessels, also to protect the cells from nearby GrB [11,12]. Since expression of PI-9 in normal tissue inhibits the apoptotic activities of GrB, overexpression of PI-9 in cancer cells could inhibit GrB-mediated apoptosis. PI-9 expression has been observed in several types of cancer, including breast cancer, cervical cancer, and colon cancer [13]. It has been shown in mice and in HeLa cells that overexpression of PI-9 directly protects cells from apoptosis through GrB inhibition [13,14], and evidence for this protective effect has been observed in breast cancer as well [15].

PI-9 expression may also affect the probability of successful treatment of cancer. PI-9 has been associated with poor clinical prognosis in lymphoma and nasopharyngeal carcinoma [16,17]. PI-9 expression can interfere with hormone therapy in breast cancer [18], and PI-9 expression is correlated with the failure of immunotherapy in melanoma [19]. Immunotherapy is of particular importance in prostate cancer, since the recently approved prostate cancer vaccine, Provenge (sipuleucel-T), uses this approach [20,21]. Taken together, PI-9 has emerged as an important immunoevasive protein in many cancers that has both therapeutic and diagnostic implications.

We hypothesized that PI-9 upregulation occurs in prostate cancer, protecting the cancer cells from GrB-mediated apoptosis. Our data indicate that PI-9 dysregulation may play a protective role early in cancer progression, allowing time for the development of additional protective mechanisms as the tumor grows. This work implies that PI-9 could be a biomarker for early-stage prostate lesions that are resistance to immunotherapy. Elimination of prostate cancer from these patients will require a therapeutic strategy that bypasses PI-9-mediated inhibition of GrB.

MATERIALS AND METHODS

Cell Culture

All cell lines were obtained from the ATCC. LNCaP cells were grown in RPMI-1640 containing

10% FBS, 10 mM HEPES, 0.11 mg/ml sodium pyruvate, 4.5 g/L glucose, 10 units/ml penicillin, and 10 mcg/ml streptomycin. PC3 cells were grown in F-12K nutrient mixture (Gibco) containing 10% FBS, 10 units/ml penicillin, and 10 mcg/ml streptomycin. NK-92 cells were grown in Myelocult media (Stem Cell Technologies) containing 200 U/ml interleukin-2 (NCI).

qPCR

RNA was prepared from each cell line using the RNEasy kit (Qiagen). For prostate tissue, scrapings were taken from frozen prostate sections and sonicated in RLT buffer (Qiagen), then RNA was prepared as above. RNA was quantified using a ND-1000 Spectrophotometer (NanoDrop). Equal amounts of RNA were used to synthesize cDNA. The RNA was combined with RNase-free water, oligo-dT and random decamer primers (Ambion) and heat denatured at 70°C for 5 min. M-MLV reverse transcriptase and its buffer (Promega) and RNase inhibitor (Roche) were added to the reaction, which was carried out at 42°C for 1 hr, followed by 95°C for 10 min. PI-9 (SerpB9Hs00244603_A1), k-alpha tubulin (Hs0074482_sH), and HPRT (433768F) Taqman probe sets were purchased from Applied Biosystems/Ambion. qPCR reactions containing Taqman Universal PCR Master Mix (Applied Biosystems), one set of Taqman probes, and the appropriate cDNA were set up in triplicate. qPCR was performed on the ABI 7300 Real Time PCR system instrument. qPCR raw data (Ct) for each sample was normalized to the reference gene for comparison.

To enable normalization between cell lines, a baseline Ct value of 45 was established at which no expression was observed. This value was assigned to LNCaP cells, which do not express PI-9, and was used to normalize the other cell lines examined to LNCaP cells.

BioPorter Delivery

The BioPorter kit was purchased from Genlantis. GrB was expressed and purified as described previously [22]. Briefly, 72 pmol of GrB was incubated with the hydrated BioPorter reagent. The BioPorter/GrB mixture was added to 1×10^5 cells/well in a 6-well plate at a final concentration of 2.1 μ M GrB. The cells and protein mix were incubated for 4 hr at 37°C, then lysed in 0.5% NP-40 buffer containing a protease inhibitor cocktail (Roche).

Western Blotting

All samples were brought up in SDS loading buffer (Invitrogen) containing 5 mM Bond-Breaker TCEP

Solution (Thermo Scientific). The mouse anti-GrB antibody was purchased from USBiological and used at 1:1,000 in 5% BSA. The polyclonal rabbit anti-PARP antibody was purchased from Cell Signaling and used at 1:1,000 in 5% milk. The mouse anti-cMyc antibody was purchased from Santa Cruz Biotechnology and used at 1:1,000 in 5% milk. Goat anti-mouse-HRP and goat anti-rabbit-HRP were purchased from BioRad and used at 1:2,000 in 5% milk. All blots were developed using the Amersham ECL-Plus Western blotting detection system (GE Healthcare).

Flow Cytometry

All flow cytometry was carried out on the FACScaliber instrument from BD Biosciences. For detection of PI-9, cells were fixed and permeabilized using the BD Cytfix/Cytoperm kit (BD Biosciences) according to the manufacturer's instructions. For detection of endogenous PI-9, a mouse monoclonal anti-PI-9 antibody (clone 7D8, MBL Medical and Biological Labs) were added at a final concentration of 5.0 $\mu\text{g}/\text{ml}$ and incubated for 30 min at 4°C. As a control, an untargeted mouse IgG antibody (BD Biosciences) was added at the same concentration. Following the removal of unbound primary antibody, a goat anti-mouse secondary antibody that was conjugated to the dye FITC (BD Biosciences) was added to a final concentration of 10 $\mu\text{g}/\text{ml}$. After incubating for 30 min at 4°C, unbound secondary antibody was removed and cells were analyzed. For detection of myc-tagged PI-9, a similar protocol was followed except an anti-myc antibody directly conjugated to a fluorochrome was used.

For detection of cell surface MIC A and MIC B, LNCaP-pcDNA cells were harvested and resuspended in Stain Buffer (FBS) (BD Biosciences). A mouse anti-human MIC A/MIC B antibody or its isotype control (BioLegend) were added to approximately 2×10^5 cells at a final concentration of 20.0 $\mu\text{g}/\text{ml}$ and incubated for 30 min at 4°C. Following removal of unbound primary, a FITC-conjugated goat anti-mouse secondary antibody (BD Biosciences) was used at a final concentration of 10 $\mu\text{g}/\text{ml}$. Cells were incubated for 30 min at 4°C washed to remove unbound secondary antibody, and resuspended in Stain Buffer FBS for flow cytometry analysis.

Transfection

The PI-9 (serpinB9) gene was synthesized with an N-terminal myc tag by GeneArt using human codon bias. After the start Met, the myc tag (EQKLISEEDL) was followed by a GGS linker. The synthesized gene was sub-cloned into pcDNA3.1(+) and the identity of

the construct confirmed by *HindIII* and *XhoI* digestion and DNA sequencing.

To create the LNCaP-PI9 and LNCaP-pcDNA stables, both the PI-9 construct sub-cloned into pcDNA3.1(+) and empty pcDNA3.1(+) was linearized with *PvuI* restriction enzyme. Following purification, 2.0 μg of DNA was transfected into LNCaP cells using GenJet in vitro DNA transfection reagent for LNCaP cells, version II (SignaGen Labs) following the manufacturer's protocol. Approximately 48 hr post-transfection, cells were switched into media containing 500 $\mu\text{g}/\text{ml}$ G418 (Invitrogen). At this G418 concentration, un-transfected cells were killed in approximately 10 days. Cells that survived the G418 selection were expanded and used for all subsequent assays.

Cell Death Assay

LNCaP cells were washed in PBS and resuspended at 2×10^6 cells/ml in PBS. TFL4 dye (OncoImmunin) was added at 1:300,000 and the cells were incubated for 15 min at 37°C. LNCaP cells were washed in PBS, resuspended in Myelocult media plus 200 U/ml IL-2, then aliquoted in triplicate into wells at 1×10^5 cells/well. NK-92 cells in Myelocult media plus 200 U/ml IL-2 were added to the appropriate wells at ratios of 0:1, 5:1, 10:1, or 30:1 in a final volume of 200 μl /well. The plate was spun at $175 \times G$ for 5 min, then incubated at 37°C for 4 hr. Each NK-92/LNCaP cell mixture was brought up in 500 μl of PBS containing a final concentration of 2 $\mu\text{g}/\text{ml}$ propidium iodide (PI) (BioVision). Cell death was assessed on a FACScaliber flow cytometer (BD Biosciences) by counting the number of cells positive for propidium iodide (PI) and TFL4.

Immunohistochemistry

Immunohistochemical staining was conducted on paraffin-embedded prostate tissue sections by the UCSF Tissue Core. Tissue sections were deparaffinized with xylene and alcohol, and were then subjected to heat-based antigen retrieval in the microwave for 10 min in 10 mM sodium citrate buffer, pH 6.0 followed by cooling at room temperature for 30 min. Samples were rinsed in water and PBS and then blocked in normal horse serum for 30 min. Tissue sections were then incubated overnight at room temperature with a 1:10 dilution of the PI9-17 monoclonal primary anti-PI-9 antibody (Monosan) in PBS containing 1% bovine serum albumin (BSA). On the following day, slides were rinsed in PBS and incubated for 30 min with the secondary biotinylated horse anti-mouse antibody at a 1:200 dilution in PBS containing 1% BSA. The ABC (Vector) stain was then

applied at a 1:100 dilution and incubated for 30 min. After rinsing again in PBS, slides were subjected to DAB chromogen stain, hematoxylin counterstain, and were dehydrated in alcohol and xylene.

RESULTS

PI-9 Is Expressed in Cell Lines Derived From Prostate Cancer

To determine the role PI-9 plays in prostate cancer, we first tested whether PI-9 was expressed in cell lines derived from prostate cancers. qPCR was used to measure the amount of PI-9 mRNA in the highly invasive and androgen independent PC3 cell line, and in the non-invasive and androgen responsive LNCaP cell line. As a positive control, the amount of PI-9 mRNA was also measured in natural killer (NK-92) cells, a type of CL known to express high levels of PI-9. mRNA was measured using Taqman probes for PI-9 and for two reference genes, HPRT and α -tubulin. As shown in Figure 1A, PC3 cells expressed measurable quantities of PI-9, but LNCaP cells did not. As expected, NK-92 cells expressed PI-9 in great abundance, 324-fold more than PC3 cells. PI-9 levels were confirmed at the protein level by flow cytometry (Supplementary Fig. 1). A third cell line, the androgen independent and invasive DU-145 cells, was also found to contain PI-9 (data not shown). However, these cells were resistant to the reagents used in subsequent experiments, so functional studies were continued with the PC3 and LNCaP cell lines. These results show that PI-9 is expressed in PC3 cells but not in LNCaP cells at both the mRNA and protein levels.

PI-9 Inhibits Granzyme B in PC3 Cells

After demonstrating that PI-9 was made in cell lines derived from some prostate cancers, we next asked whether cellular PI-9 could inhibit its target protease, GrB. Two cell lines with no detectable PI-9 (LNCaP cells) and measurable PI-9 (PC3 cells) were tested for GrB resistance. GrB was introduced into each cell line using BioPorter, a reagent for protein transfection. The cells were lysed at various time points for up to 6 hr after the introduction of GrB. GrB activity was measured by monitoring cleavage of PARP, a 113 kDa substrate of GrB, by Western blot. As shown in Figure 1B, GrB cleaved PARP in LNCaP cells, which lack PI-9. However, GrB did not cleave PARP in PC3 cells, which contain PI-9. GrB, a cationic protein, is known to bind to the surface of cell membranes, though it requires perforin for entry [23]. GrB binding to the membrane can be observed in the absence of BioPorter (Fig. 1C, lane 2), however, these

lysates were prepared in the presence of SDS to ensure this external GrB did not react with internal PI-9. These results indicate that PI-9 inhibits GrB in a cellular context.

Since PARP cleavage suggested that PI-9 inhibited GrB activity, we next set out to directly demonstrate that PI-9 inhibited GrB. To directly test inhibition, GrB was added to PC3 cells using BioPorter, and the cells were lysed after 6 hr. Since GrB has been shown to bind to the plasma membrane of cells, lysates were prepared under denaturing conditions to prevent cell surface GrB from forming a complex with intracellular PI-9. These lysates were processed by Western blot to detect GrB. As shown in Figure 1C, PI-9 formed a stable complex with GrB that appeared at 85 kDa, and this complex was not observed in the absence of BioPorter. This result indicates that PI-9 binds to GrB and suggests that the GrB inhibition observed in PC3 cells is mediated by PI-9.

PI-9 Protects Prostate Cancer Cells From Apoptosis

Having shown that PI-9 inhibited GrB *in vitro*, we next asked whether PI-9 inhibition could prevent GrB-mediated apoptosis in the context of natural killer cell mediated death. To answer this question, NK-92 cells were chosen as effectors because selective inhibition of GrB in this cell line significantly reduced target cell lysis [24,25]. To test the role of PI-9 in apoptosis assays, PI-9 was overexpressed in LNCaP cells. Overexpression was chosen after attempts to knock-down PI-9 expression or remove PI-9 by immunodepletion in PC3 cells were unsuccessful, due to the stability and long half life of PI-9. LNCaP cells were selected as targets for two reasons: LNCaP cells express no detectable PI9, and LNCaP cells express the NK activating ligands MHC class I chain-related molecules (MICs, Supplementary Fig. 2) [26], which suggested that NK-92 cells could recognize LNCaP cells.

To generate a PI-9 overexpression cell line, a Myc-tagged PI-9 gene or empty pcDNA vector control was transfected and stably integrated into LNCaP cells. These cell lines were referred to as LNCaP-PI-9 and LNCaP-pcDNA, respectively. Myc-PI-9 expression was tested by immunoblotting of lysates using an anti-Myc antibody. A 45-kDa band appeared in lysates from LNCaP-PI-9 and was absent in lysates from LNCaP-pcDNA (Fig. 2A). Analysis of myc staining by flow cytometry showed that greater than 80% of LNCaP-PI-9 cells expressed Myc-PI-9 relative to LNCaP-pcDNA cells (Fig. 2B). An identical result was obtained when staining was performed with an anti-PI9 antibody (data not shown). This result indicated successful PI-9 overexpression.

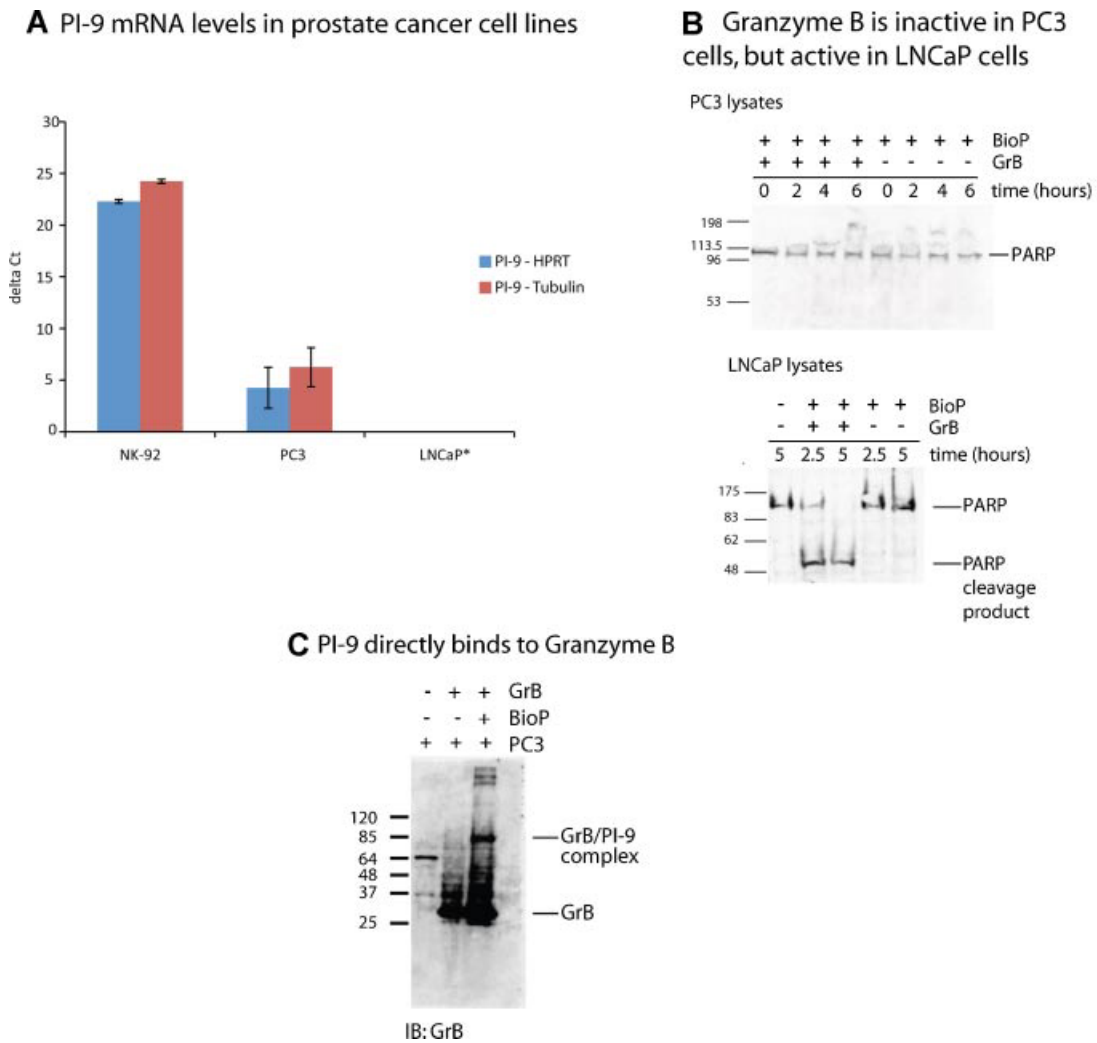


Fig. 1. PI-9 inhibits Granzyme B when present in prostate cancer cell lines. **A:** PI-9 levels were measured by qPCR. The threshold cycle (Ct) of PI-9 mRNA for each cell line was normalized to the Ct of two reference genes. Each cell line was then normalized to LNCaP cells. *LNCaP cells contained no detectable message, and were assigned a Ct value after which no message was observed in any cell line to establish a baseline. **B:** The protein transfection reagent BioPorter (BioP) was used to deliver recombinant GrB to both PC3 and LNCaP cells. Lysates of GrB treated cells were immunoblotted for the GrB substrate PARP to determine if GrB was active in these cell lines. Controls showed that protein delivery into PC3 cells with BioPorter was possible. **C:** PC3 cell lysates containing GrB delivered by BioPorter were blotted with an anti-GrB antibody. A higher molecular weight complex appears which corresponds to PI-9 bound to GrB.

Once LNCaPs stably expressing PI-9 were generated, the functional ability of myc-PI-9 was tested. LNCaP-pcDNA and LNCaP-PI-9 cell lysates were generated under non-denaturing conditions, then incubated with recombinant GrB. Western blotting for PI-9 using an anti-cMyc antibody showed the appearance of a 70 kDa band in only the LNCaP-PI-9 samples, which indicated the formation of a PI-9/GrB complex (Fig. 2C). The PI-9/GrB complex was also detected using an anti-GrB antibody (Fig. 2D). This complex demonstrates that myc-PI-9 is functional through its ability to bind to GrB. To further test the inhibition of GrB by myc-PI-9, the same blots were

analyzed for the presence of PARP, a substrate of GrB. In the LNCaP-pcDNA samples, several PARP cleavage products were observed, and there was a 50% reduction in full length PARP (Fig. 2E). In the LNCaP-PI-9 samples, very little PARP cleavage was observed, and 97% of the full-length PARP remained. These results indicate that overexpressed myc-PI-9 can successfully inhibit GrB and prevent cleavage of its substrates in LNCaP cells.

Once these cell lines were generated and PI-9 function verified, they were tested for resistance to NK-92-induced cell death. Fluorescently labeled LNCaP cells were co-incubated with unlabeled NK-92

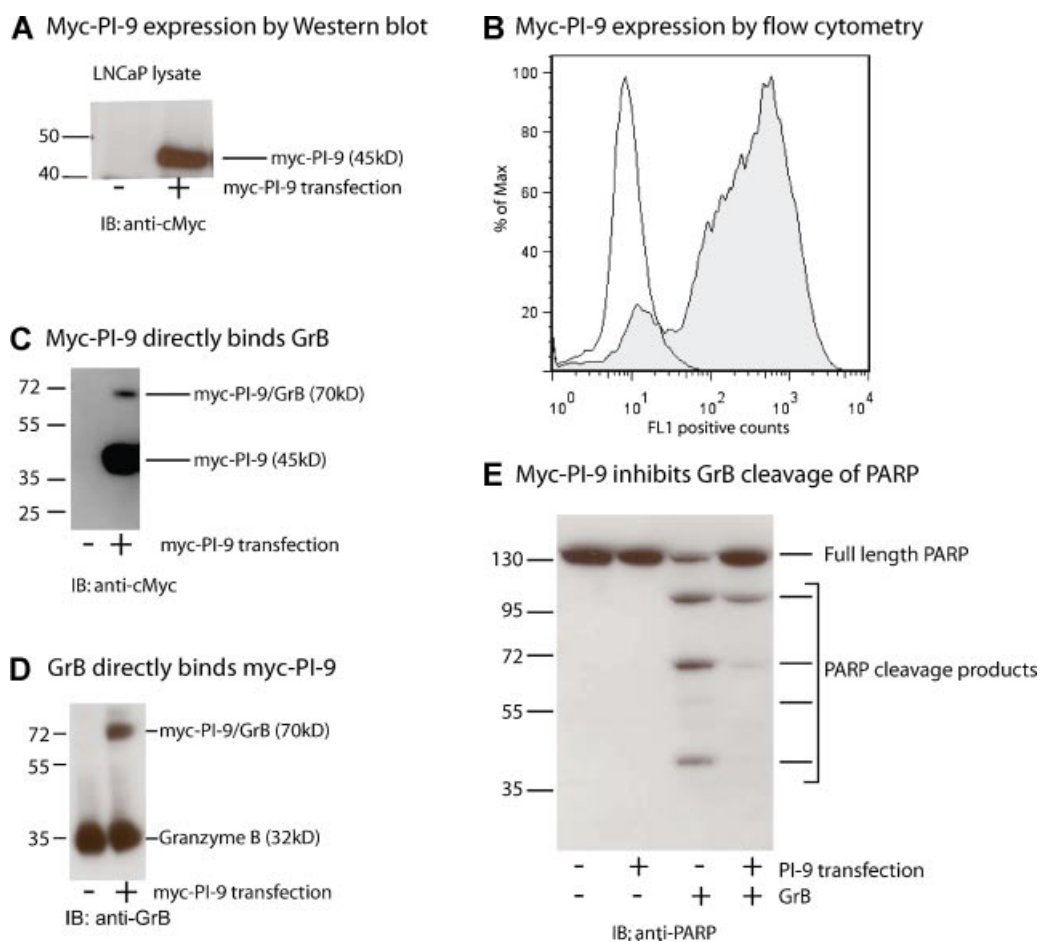


Fig. 2. Overexpression of PI-9 in LNCaP cells. **A:** LNCaPs transfected with either Myc-PI-9 (+) or a pcDNA control vector (-) were lysed and blotted with anti-Myc. **B:** myc-PI-9 levels in LNCaP pcDNA (unfilled) and LNCaP PI9 (filled). Identical results were obtained with the anti-myc antibody and the anti-PI9 antibody. **C:** LNCaP lysates transfected with either Myc-PI-9 (+) or a pcDNA control vector (-) were incubated with recombinant GrB and blotted with anti-Myc. **D:** The experiment in 2C was repeated and blotted with anti-GrB. **E:** LNCaP lysates transfected with either Myc-PI-9 (+) or a pcDNA control vector (-) were incubated with recombinant GrB and PARP cleavage was assessed.

cells in varying ratios for 4 hr. Cells were then stained with propidium iodide (PI) and target cell death was quantified by the percentage of PI positive, fluorescent cells by flow cytometry. All samples were normalized to LNCaP cells in the absence of NK-92 cells. LNCaP-pcDNA cells were killed by the NK-92 cells at all ratios (Fig. 3A). The LNCaP cells overexpressing PI-9 exhibited less cell death than the LNCaP-pcDNA cells over the entire range of ratios. This result indicates that LNCaP cells expressing PI-9 are resistant to NK-92 cell-induced cell death. The presence of PI-9 can indeed protect prostate cancer cells from NK-92-mediated apoptosis.

To further confirm the mechanism by which PI-9 prevents cell death, the target cells were examined for the degree of cleavage of the GrB substrate PARP. LNCaP cells were incubated with NK-92 cells in a ratio of 0:1 or 20:1 for 6 hr, lysed, and blotted for PARP. As shown in Figure 3B, PARP was present in

both lysates, as indicated by a 113 kDa band present both before and after incubation with NK-92 cells. In the LNCaP-pcDNA cells, significant PARP cleavage was observed after incubation with NK-92 cells. These PARP cleavage products were only faintly observed in the LNCaP-PI-9 cells after incubation with NK-92 cells, approximately twofold less than in the LNCaP-pcDNA lysates. These results indicate that PI-9 protected cells from apoptosis by inhibiting GrB.

PI-9 Can Be Detected in Prostate Tumors

Having shown that PI-9 expression protects prostate cancer cells from NK-92-induced cell death, we undertook a small pilot study to determine whether this effect occurred in prostate tumors. PI-9 mRNA was measured in 32 prostate biopsies containing both cancerous and benign tissue. PI-9 expression was measured by qPCR using Taqman probes for PI-9 and

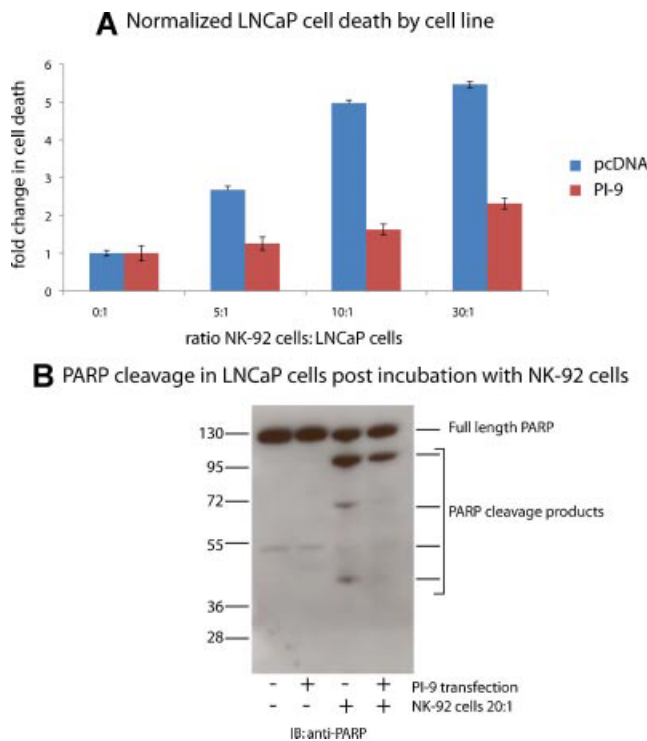


Fig. 3. LNCaP cells that overexpress PI-9 are resistant to NK-mediated cell death. **A:** LNCaP cells transfected with either Myc-PI-9 (+) or a pcDNA control vector (-) were co-incubated with varying ratios of NK-92 cells. Cell death was assayed using flow cytometry by propidium iodide staining. LNCaP-only cell death was used to normalize cell death in the presence of NK cells. **B:** LNCaP cells transfected with either Myc-PI-9 (+) or a pcDNA control vector (-) were co-incubated at 1:20 with NK-92 cells. LNCaPs were isolated and blotted for PARP cleavage.

two reference genes, and each tumor sample was normalized to its corresponding benign sample. As shown in Figure 4A, greater PI-9 expression was observed in low grade tumors than in the benign control. However, PI-9 expression in higher grade tumors was stochastic. These results were statistically significant when the high grade tumors were grouped by PI-9 expression using the Mann-Whitney rank sum test (Supplemental Fig. 3, $P = 0.0043$ for low expression of PI-9, $P = 0.0238$ for high expression of PI-9). These results suggest that PI-9 expression is elevated in low grade tumors but stochastically dysregulated in high grade prostate tumors, implying the function of PI-9 is needed early in cancer progression.

To confirm this observation at the protein level, 54 slices from the prostate biopsies of 24 patients were tested for the presence of PI-9 by immunohistochemistry against PI-9. As shown in Figure 4B, PI-9 was found in both low and high grade tumors. The tumors showed a similar pattern as the mRNA data, though fewer tumors overall stained positively than in the

qPCR study. In the immunohistochemistry analysis, 45% of the low grade tumors had more PI-9 than the benign tissue, but only 25% of the high grade tumors had more PI-9. Interestingly, PI-9 staining intensity was observed most consistently in high grade prostatic intraepithelial neoplasia (HGPIN, 76%), a precursor to prostate cancer, as well as in regions of atrophy (76%). Taken together, this pilot study indicates that PI-9 is present in pre-cancerous states, and PI-9 expression remains in some tumors.

DISCUSSION

Here we report that the protease inhibitor PI-9 can protect prostate cancer cells from NK-92 cell-induced apoptosis by inhibiting GrB. We also provide tantalizing preliminary data that this protective mechanism operates early in the progression of prostate cancer. In our experiments, PI-9 expressed by prostate cancer cells inhibited GrB. LNCaP cells that overexpressed PI-9 were resistant to apoptosis mediated by NK-92 cells, but LNCaP cells that lacked PI-9 were sensitive. This observation shows that PI-9 can protect prostate cells from NK cell-mediated apoptosis, one arm of immunosurveillance. Additionally, immunohistochemistry showed that PI-9 was present in HGPIN tumors, one of the earliest forms of prostate cancer, as well as in atrophic lesions. Our results suggest that PI-9 protects prostate tumors from immunosurveillance early in cancer progression by blocking the apoptotic response, while additional mechanisms protect tumors later in their progression through blocking recognition.

Why would PI-9 initially become upregulated in prostate tumors? As shown in Figure 4B, not only is PI-9 upregulated in early tumors, PI-9 is also abundantly expressed during atrophy, including prostatic inflammatory atrophy (PIA, Supplemental Fig. 3). Atrophy is a known hallmark of an inflamed prostate, and evidence has shown it can precede the development of PIN [27,28]. A correlation between inflammation and prostate cancer has long been observed, and PI-9 could be the molecular mechanism that connects the two pathologies. PI-9 is often upregulated in response to inflammation to protect bystander cells from inadvertently introduced GrB [12], and PI-9 expression can be induced by pro-inflammatory molecules like IL-1 β and TNF- α [29]. Therefore, prostatic inflammation may provide a trigger for PI-9 upregulation. In a subset of inflamed cells, this PI-9 upregulation may become permanent, creating a cancer-prone population of cells that are resistant to immunosurveillance.

While PI-9 allows cancer cells to block the apoptotic response of immunosurveillance, prostate cancer

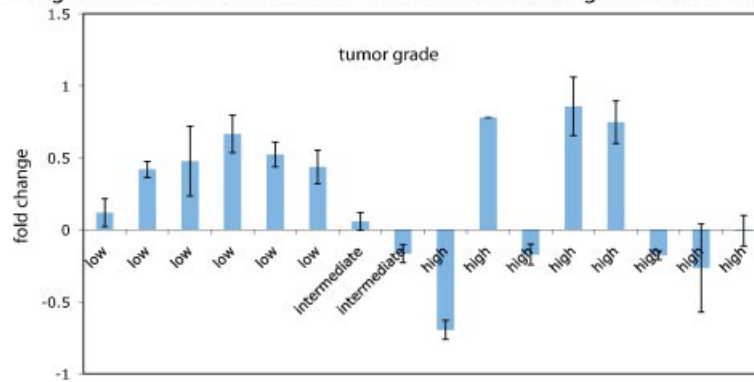
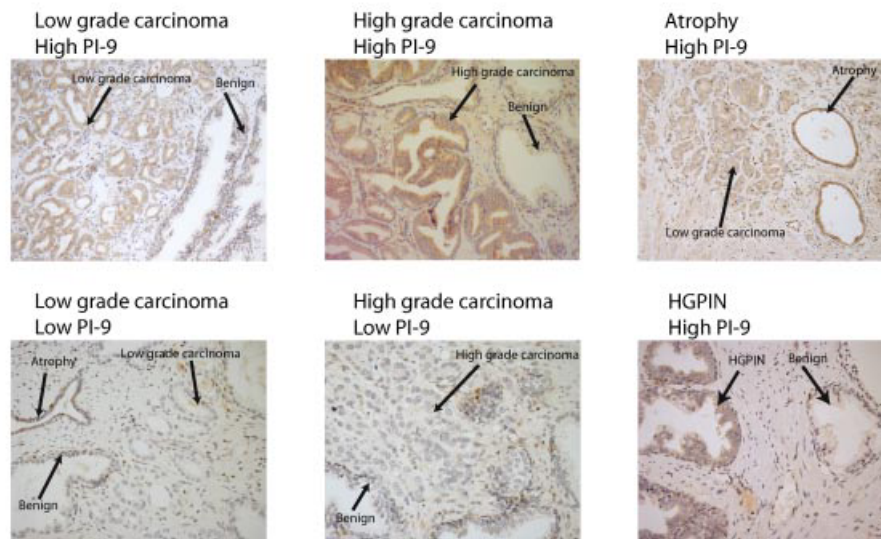
A Change in PI-9 Levels in Prostate Tumors Relative to Benign Prostate Tissue by Patient**B** Immunohistochemistry of PI-9 shows dysregulation in tumors, upregulation in precursors

Fig. 4. PI-9 is found in several stages in prostate tissue. Low grade tumors were classified as having a Gleason Score of 6, intermediate grade tumors had a Gleason Score of 7, and high grade tumors had a Gleason Score of 8+. **A:** PI-9 is upregulated in low grade tumors, but dysregulated in high grade tumors. PI-9 levels were measured in tumor and benign patient tissue samples. PI-9 levels in tumors were then normalized to the benign levels to calculate the fold change. **B:** Immunohistochemistry for PI-9 was performed on slices of prostate tissue. PI-9 staining was heterogeneous in both benign and carcinoma regions and consistently positive in atrophy and PIN regions.

cells have also been shown to block recognition by CLs through the process of MIC shedding. MICs, or MHC class I chain-related molecules, are expressed on the surface of cancerous cells and target these cells for destruction. MICs bind to the NKG2D receptor on NK cells [26] which initiates granule exocytosis, killing the MIC-expressing cell [30,31]. MIC is expressed in HGPIN and low grade prostate tumors, however, membrane bound MIC is cleaved by a metalloprotease in high grade tumors. This allows cancerous cells to evade detection by NK cells [24,26,32]. Early expression of PI-9 could allow prostate cancer cells to survive while MIC is present.

We hypothesize that PI-9 expression may protect prostate cancer tumors early in cancer progression, when MIC is still present on the surface of cells. We find that PI-9 is expressed in the early HGPIN stage, a

stage in which MIC is also expressed, but stochastically expressed in advanced tumors (Fig. 4B). These results imply that PI-9 is important early in cancer progression, when MIC is still present on the surface of cells. PI-9 may not be important in the later stages, after MIC is shed and cells are in less danger of NK cell-induced apoptosis. Therefore, PI-9 protects prostate cancer cells early in their progression, when surface MIC is expressed, and PI-9 is then dysregulated in later stages when MIC is shed. Future studies beyond cell lines could further elucidate the role of PI-9 and MIC early in prostate cancer progression, as most cell lines and patient samples are derived from late-stage tumors.

In summary, prostate cancer uses both PI-9 upregulation and MIC shedding at consecutive stages in its progression to evade immunosurveillance.

Treatment for prostate cancer must take into account both mechanisms, as PI-9 has been shown to affect hormone therapy in breast cancer [18] and immunotherapy in melanoma [19]. MIC shedding could be counteracted by inhibiting matrix metalloprotease-14 [32]. PI-9 is a substrate of Granzyme M, so Granzyme M upregulation could alleviate the resistance to cell death caused by PI-9 [33]. Targeting both MIC shedding and PI-9 expression could lead to an effective treatment strategy that enhances the immune response to cancer cells.

ACKNOWLEDGMENTS

We would like to thank Dr. Peter Carroll for performing the prostatectomies, Kevin Chew for sectioning the prostate samples, Sarah Elmes for training and use of the flow cytometer, and the lab of Dr. Keith Yamamoto for the generous use of their qPCR instruments and reagents. We would also like to thank Dr. Aaron Lebeau, Dr. Marc Shuman, and Dr. Lawrence Fong for helpful discussions. This work was funded by the National Institute of Health (R01CA128765).

REFERENCES

- Russell JH, Ley TJ. Lymphocyte-mediated cytotoxicity. *Annu Rev Immunol* 2002;20:323–370.
- Rawlings ND, Morton FR, Kok CY, Kong J, Barrett AJ. MEROPS: The peptidase database. *Nucleic Acids Res* 2008;36(Database issue):D320–D325.
- Yang X, Stennicke HR, Wang B, Green DR, Jänicke RU, Srinivasan A, Seth P, Salvesen GS, Froelich CJ. Granzyme B mimics apical caspases. Description of a unified pathway for transactivation of executioner caspase-3 and -7. *J Biol Chem* 1998;273(51):34278–34283.
- Medema JP, Toes RE, Scaffidi C, Zheng TS, Flavell RA, Melief CJ, Peter ME, Offringa R, Krammer PH. Cleavage of FLICE (caspase-8) by granzyme B during cytotoxic T lymphocyte-induced apoptosis. *Eur J Immunol* 1997;27(12):3492–3498.
- Anthony DA, Andrews DM, Watt SV, Trapani JA, Smyth MJ. Functional dissection of the granzyme family: Cell death and inflammation. *Immunol Rev* 2010;235(1):73–92.
- Lieberman J. The ABCs of granule-mediated cytotoxicity: New weapons in the arsenal. *Nat Rev Immunol* 2003;3(5):361–370.
- Lefrançois L, Obar JJ. Once a killer, always a killer: From cytotoxic T cell to memory cell. *Immunol Rev* 2010;235(1):206–218.
- Hanahan D, Weinberg RA. Hallmarks of cancer: The next generation. *Cell* 2011;144(5):646–674.
- Kaiserman D, Bird PI. Control of granzymes by serpins. *Cell Death Differ* 2010;17(4):586–595.
- Bird PI. Serpins and regulation of cell death. *Results Probl Cell Differ* 1998;24:63–89.
- Bladergroen BA, Strik MCM, Bovenschen N, van Berkum O, Scheffer GL, Meijer CJLM, Hack CE, Kummer JA. The Granzyme B inhibitor, protease inhibitor 9, is mainly expressed by dendritic cells and at immune-privileged sites. *J Immunol* 2001;166(5):3218–3225.
- Buzza MS, Hirst CE, Bird CH, Hosking P, McKendrick J, Bird PI. The Granzyme B inhibitor, PI-9, is present in endothelial and mesothelial cells, suggesting that it protects bystander cells during immune responses. *Cell Immunol* 2001;210(1):21–29.
- Medema JP, de Jong J, Peltenburg LT, Verdegaal EM, Gorter A, Bres SA, Franken KL, Hahne M, Albar JP, Melief CJ, Offringa R. Blockade of the granzyme B/perforin pathway through overexpression of the serine protease inhibitor PI-9/SPI-6 constitutes a mechanism for immune escape by tumors. *Proc Natl Acad Sci USA* 2001;98(20):11515–11520.
- Cunningham TD, Jiang X, Shapiro DJ. Expression of high levels of human proteinase inhibitor 9 blocks both perforin/granzyme and Fas/Fas ligand-mediated cytotoxicity. *Cell Immunol* 2007;245(1):32–41.
- Jiang X, Orr BA, Kranz DM, Shapiro DJ. Estrogen induction of the granzyme B inhibitor, proteinase inhibitor 9, protects cells against apoptosis mediated by cytotoxic T lymphocytes and natural killer cells. *Endocrinology* 2006;147(3):1419–1426.
- ten Berge RL, Oudejans JJ, Ossenkoppele GJ, Meijer CJLM. ALK-negative systemic anaplastic large cell lymphoma: Differential diagnostic and prognostic aspects—A review. *J Pathol* 2003;200(1):4–15.
- Oudejans JJ, Harijadi H, Kummer JA, Tan IB, Bloemena E, Middeldorp JM, Bladergroen B, Dukers DF, Vos W, Meijer CJLM. High numbers of granzyme B/CD8-positive tumour-infiltrating lymphocytes in nasopharyngeal carcinoma biopsies predict rapid fatal outcome in patients treated with curative intent. *J Pathol* 2002;198(4):468–475.
- Jiang X, Ellison SJ, Alarid ET, Shapiro DJ. Interplay between the levels of estrogen and estrogen receptor controls the level of the granzyme inhibitor, proteinase inhibitor 9 and susceptibility to immune surveillance by natural killer cells. *Oncogene* 2007;26(28):4106–4114.
- van Houdt IS, Oudejans JJ, van den Eertwegh AJM, Baars A, Vos W, Bladergroen BA, Rimoldi D, Muris JFF, Hooijberg E, Gundy CM, Meijer CJLM, Kummer JA. Expression of the apoptosis inhibitor protease inhibitor 9 predicts clinical outcome in vaccinated patients with stage III and IV melanoma. *Clin Cancer Res* 2005;11(17):6400–6407.
- Harzstark AL, Small EJ. Immunotherapy for prostate cancer using antigen-loaded antigen-presenting cells: APC8015 (Provenge). *Expert Opin Biol Ther* 2007;7(8):1275–1280.
- Small EJ, Schellhammer PF, Higano CS, Redfern CH, Nemunaitis JJ, Valone FH, Verjee SS, Jones LA, Hershberg RM. Placebo-controlled phase III trial of immunologic therapy with Sipuleucel-T (APC8015) in patients with metastatic, asymptomatic hormone refractory prostate cancer. *J Clin Oncol* 2006;24(19):3089–3094.
- Harris JL, Peterson EP, Hudig D, Thornberry NA, Craik CS. Definition and redesign of the extended substrate specificity of Granzyme B. *J Biol Chem* 1998;273(42):27364–27373.
- Shi L, Keefe D, Durand E, Feng H, Zhang D, Lieberman J. Granzyme B binds to target cells mostly by charge and must be added at the same time as perforin to trigger apoptosis. *J Immunol* 2005;174(9):5456–5461.
- Willoughby CA, Bull HG, Garcia-Calvo M, Jiang J, Chapman KT, Thornberry NA. Discovery of potent, selective human granzyme B inhibitors that inhibit CTL mediated apoptosis. *Bioorg Med Chem Lett* 2002;12(16):2197–2200.
- Mahrus S, Craik CS. Selective chemical functional probes of granzymes A and B reveal granzyme B is a major effector of natural killer cell-mediated lysis of target cells. *Chem Biol* 2005;12(5):567–577.

26. Wu JD, Higgins LM, Steinle A, Cosman D, Haugk K, Plymate SR. Prevalent expression of the immunostimulatory MHC class I chain-related molecule is counteracted by shedding in prostate cancer. *J Clin Invest* 2004;114(4):560–568.
27. De Nunzio C, Kramer G, Marberger M, Montironi R, Nelson W, Schröder F, Sciarra A, Tubaro A. The controversial relationship between benign prostatic hyperplasia and prostate cancer: The role of inflammation. *Eur Urol* 2011;60(1):106–117.
28. Borowsky AD, Dingley KH, Ubick E, Turteltaub KW, Cardiff RD, DeVere-White R. Inflammation and atrophy precede prostatic neoplasia in a PhIP-induced rat model. *Neoplasia* 2006;8(9):708–715.
29. Kannan-Thulasiraman P, Shapiro DJ. Modulators of inflammation use nuclear factor- κ B and activator protein-1 sites to induce the caspase-1 and Granzyme B inhibitor, proteinase inhibitor 9. *J Biol Chem* 2002;277(43):41230–41239.
30. Lanier LL. On guard—Activating NK cell receptors. *Nat Immunol* 2001;2(1):23–27.
31. Raulet DH. Roles of the NKG2D immunoreceptor and its ligands. *Nat Rev Immunol* 2003;3(10):781–790.
32. Liu G, Atteridge CL, Wang X, Lundgren AD, Wu JD. The membrane type matrix metalloproteinase MMP14 mediates constitutive shedding of MHC class I chain-related molecule A independent of A disintegrin and metalloproteinases. *J Immunol* 2010;184(7):3346–3350.
33. Mahrus S, Kisiel W, Craik CS. Granzyme M is a regulatory protease that inactivates proteinase inhibitor 9, an endogenous inhibitor of granzyme B. *J Biol Chem* 2004;279(52):54275–54282.